



Skandia Sail for Gold Regatta 2010

Weymouth and Portland – Great Britain

9th – 14th August 2010

NOTICE OF RACE

(Version 19 03 10)

The Skandia Sail for Gold Regatta will be held at Weymouth and Portland National Sailing Academy from 9th to 14th August 2010.

The Organising Authority is the Royal Yachting Association.

This regatta is part of the 2010 ISAF Sailing World Cup (SWC) series as described in Appendix A.

1 Rules

1.1 The regatta will be governed by the rules as defined in *The Racing Rules of Sailing* (RRS).

1.2 For fleet racing, Appendix P, Special Procedures for Rule 42, will apply.

1.3 For medal races, ISAF Addendum Q, Umpired Fleet Racing, available on the ISAF website (www.sailing.org), will apply and changes a number of racing rules. The version that is current when the regatta begins will appear in full in the Sailing Instructions.

1.4 For the Women's Keelboat Match Racing event, Rules for the Handling of Boats will apply including practice racing, and will appear in full in the Sailing Instructions. The International Elliott 6m Class rules will not apply.

1.5 For Paralympic events,

1.5.1 Section K of the International 2.4mR Class rules will apply.



1.5.2 SKUD 18 Class Rules C2.1(d) and C3.2(e) will not apply.

1.5.3 This will be a Sonar Class Association Appendix B – Alternative Rules event.

1.6 The RYA Prescriptions that will apply are stated in full in Addendum B of this Notice of Race.

1.7 If there is a conflict between languages the English text will take precedence.

2 Advertising and Bow Numbers

2.1 Boats may be required to display bow numbers and advertising chosen and supplied by the organizing authority.

2.2 In accordance with ISAF Regulation 20.6.5, competitors aboard the boats ranked first, second and third in the series at the beginning of that day, shall wear yellow, blue and red bibs respectively while afloat. The bibs will be provided by the organizing authority.

3 Eligibility and Entry

3.1 Competitors and coaches shall enter by completing the on-line entry form on the event website www.skandiasailforgoldregatta.co.uk and paying the required fees. On-line entries must be received no later than **26th July 2010** and will not be accepted after that date.

FOR WOMEN'S MATCH RACING the closing date for on-line applications is **5th July 2010**, no entry fee is required on application, successful applicants will be informed by **9th July 2010** and on-line payment must be received no later than **26th July 2010** and will not be accepted after that date.

3.2 ISAF Eligibility shall apply. Each athlete shall be registered as an ISAF Sailor on the ISAF website: www.sailing.org/isafsailor

3.3 Unless otherwise approved by the IOC or the ISAF Executive, each competitor shall be a national of the country of the Member National Authority (MNA) which enters the boat or endorses the person in charge (as defined by RRS 46). This requirement does not apply to a crew member who receives approval to compete in the regatta from the MNA of the person in charge. Each competitor shall present proof of their nationality or the approved waiver at registration.

3.4 Olympic gender requirements will apply for each Olympic event. Men and mixed teams are not eligible to compete in women's events. Women are not eligible to compete in men's events.

3.5 Competitors under 18 years of age shall present a signed and completed parent (or guardian) consent and declaration form at registration. The forms are available for download on the event website www.skandiasailforgoldregatta.co.uk

3.6 For the Paralympic events, Paralympic Eligibility criteria applies.

3.7 For the Women's Keelboat Match Racing event, the crew (including the skipper) shall total three with a maximum total crew weight at registration of 204 kg when wearing at least shorts and



shirt. Except in an emergency, the skipper shall helm the boat at all times while racing. All registered crew shall sail all races. However,

3.7.1 when a registered skipper is unable to continue in the event, the OA may authorise an original crewmember to substitute.

3.7.2 when a registered crewmember is unable to continue in the event, the OA may authorise a temporary substitute or other adjustment.

3.8 The regatta is open to boats competing in events chosen for the 2012 Olympic Sailing Competition and the 2012 Paralympics Sailing Competition.

Event	Class	Event Quota	Minimum Entries	MNA Quota
Men's One Person Dinghy	Laser	150	20	1
Women's One Person Dinghy	Laser Radial	120	20	1
Men's One Person Dinghy Heavy	Finn	80	20	1
Men's Two Person Dinghy	470-M	120	20	1
Women's Two Person Dinghy	470-W	80	20	1
Men's Two Person Dinghy (High Performance)	49er	100	20	1
Men's Keelboat	Star	80	10	1
Women's Keelboat Match Racing	Elliott 6m	24	20	1
Men's Windsurfer	RS:X-M	120	20	1
Women's Windsurfer	RS:X-W	80	20	1
Paralympics One Person Keelboat	2.4mR	20	8	1
Paralympics Two Person Keelboat	SKUD18	15	5	1
Paralympics Three Person Keelboat	Sonar	15	5	1

3.9 The organizing authority may cancel an event if the minimum number of entries have not been received by midnight (local time), **26th July 2010**. Competitors will be notified of cancelled events by email and posting on the event website. The entry fees for cancelled events will be refunded.

3.10 For any event in which the number of applications exceeds the Event Quota on midnight (local time), **26th July 2010**, the following procedure will apply.



3.10.1 The MNAs of the applications received will be sorted in Priority Order, based on the order of each MNA's highest appearance on the ISAF Sailing World Cup series standings on 24th June 2010.

3.10.2 Ties in the Priority Order will be resolved in favour of the MNA with the higher appearance in the most recent SWC event(s) in which any tied MNA appears. Remaining ties will be broken in favour of the MNA whose entry application was received first. MNA's not appearing in the applicable SWC standings shall be sorted by application date and added at the end of the MNA Priority Order.

3.10.3 The applications will be accepted, as follows, until the quota is filled:

- (a) One place awarded to the host MNA.
- (b) One place, awarded in MNA Priority Order, for each MNA with a remaining entry application.
- (c) Repeat 3.10.3(b) above until the quota is filled.

3.11 For any event in which NOR 3.10 applies and one or more MNA's have qualified application(s) remaining but have not met their MNA Quota, the Event Quota will be increased accordingly. NOR 3.10.3(c) will be applied and reapplied until each MNA with a remaining application reaches their MNA Quota. If application(s) still remain, each MNA with remaining application(s) will decide which application(s) fill the available slots.

3.12 For any event in which NOR 3.10 does not apply, entries will be accepted in the order received until the Event Quota is reached.

4 IFDS Functional Classification

4.1 Disabled sailors shall have valid International Classification under the 2009-2012 IFDS Functional Classification System.

4.2 Protests regarding classification may be filed with the on site classifiers not later than "first appearance." However, protests will not be decided at the regatta.

5 Fees

5.1 Fees are stated in **Pounds Sterling** and include any local taxes.

Class	Entry Fee (£)
One-person classes	150
Two-persons classes except Star	225
Star and Sonar	300
Women Keelboat Match Racing	1500

5.2 The entry fee for the Women's Keelboat Match Racing Event includes the boat charter fee and insurance.

5.3 For the Women's Keelboat Match Racing Event, a damage deposit is required in addition to the entry fee as follows:

5.3.1 An initial damage deposit of **£500** shall be paid at registration, unless extended by the OA. This deposit is the maximum payable by the skipper as a result of any one incident.

5.3.2 If a deduction from the damage deposit is decided by the OA, it may require the deposit be restored to its original amount before the skipper is permitted to continue in the event.

5.3.3 Any remaining deposit after the event will be refunded within 10 days after the event

6 Format

6.1 For fleet racing, the regatta will consist of an opening series and, for Olympic events, a medal race. For events with large numbers of entries, the opening series may be divided into a qualifying series and a final series. The top ten finishers in the opening series of each event will advance to the medal race, provided a minimum of 3 races have been completed in the opening series. For Paralympic events, the regatta will consist of a single series.

6.2 For match racing, the regatta will consist of an opening series, a knockout series, and a sail-off for boats not advancing to the knockout series. The organising authority may change the format, terminate or eliminate any round when conditions do not permit the completion of the intended format.

7 Schedule

7.1 Registration for competitors, coaches and team leaders is scheduled to begin **10h00** on **Friday 6th August** at Weymouth and Portland National Sailing Academy.

7.2 The first briefing for coaches and team leaders is scheduled for **12h00** on **Sunday 8th August** at Weymouth and Portland National Sailing Academy.

7.3 The first meeting with the umpires for competitors in the Women's Keelboat Match Racing event is scheduled for **18h00** on **Sunday 8th August** at Weymouth and Portland National Sailing Academy.

7.4 The Opening Ceremony is scheduled to begin **19h00** on **Sunday 8th August** at Weymouth and Portland National Sailing Academy.

7.5 The schedule of races including medal races, if any, and dates of racing is as follows:



Event	Racing Dates	Number of Races
Men's One Person Dinghy	9 to 14 August	11
Women's One Person Dinghy	9 to 14 August	11
Men's One Person Dinghy Heavy	9 to 14 August	11
Men's Two Person Dinghy	9 to 14 August	11
Women's Two Person Dinghy	9 to 14 August	11
Men's Keelboat	9 to 14 August	11
Women's Keelboat Match Racing	7 to 14 August (includes practice days)	186
Men's Two Person Dinghy High Performance	9 to 14 August	16
Men's Windsurfer	9 to 14 August	11
Women's Windsurfer	9 to 14 August	11
Paralympics One Person Keelboat	9 to 13 August	10
Paralympics Two Person Keelboat	9 to 13 August	10
Paralympics Three Person Keelboat	9 to 13 August	10

7.6 On the last day of racing, no warning signal will be made after **15h30** for fleet racing and no attention signal after **15h30** for match racing.

8 Measurement

8.1 Competitors shall provide copies of any measurement certificates required by class rules at the time of registration.

8.2 Competitors shall produce evidence of membership of the appropriate class association at the time of registration as may be required by the organising authority.

8.3 All boats shall carry national letters on their sails.

8.4 Boats shall be available for inspection from **Friday 6th August - 14h00** or as agreed in writing with the organising authority.

8.5 Boats may be subject to inspection at any time during the event. The procedures for inspections will be specified in the sailing instructions or event measurement regulations.

8.6 The equipment limitations as specified in the class rules shall apply.



8.7 The Women's Match Racing event will be sailed in boats supplied by the Organizing Authority. Eight International Elliott 6m Class boats will be provided, each with a mainsail, jib and spinnaker. Boats will be allocated by draw, either daily or for each round as decided by the Race Committee.

9 Sailing Instructions

Sailing Instructions will be available on **Friday 6th August** at registration and on the event website. Measurement, Support Boat and other documents governing the event will be published with the sailing instructions.

10 Venue

10.1 The regatta will be held at the Weymouth and Portland National Academy, Portland, Dorset, Great Britain.

10.2 The racing area will be in Portland Harbour and Weymouth Bay. Addendum C shows the intended positions of the racing areas.

11 The Courses

The courses will be Windward/Leeward or Trapezoid except that any other courses adopted by ISAF for the 2012 Olympic Sailing Competition may also be used.

12 Penalty System

For the Men's Two Person Dinghy High Performance and Two Person Paralympic events, RRS 44.1 and RRS P2.1 are changed so that the Two-Turns Penalty is replaced by the One-Turn Penalty.

13 International Jury

An International Jury will be appointed in accordance with rule 91(b). Its decisions will be final as provided in rule 70.5.

14 Scoring

14.1 Fleet Racing

14.1.1 The Low Point System of RRS Appendix A will apply. RRS B8 is deleted.

14.1.2 At least 3 races are required to be completed to constitute a regatta. When 5 or more opening series races have been completed, a boat's series score will be the total of her race score excluding her worst score.

14.1.3 In medal races, a boat's score shall be double the number of points specified in RRS Appendix 4.1, and the score for that race shall not be excluded from the series score.



14.1.4 Ties in the series score between boats with different medal race points scores shall be broken in favour of the boat that scored better in the medal race. This changes Appendix A8.

14.2 Match Racing

14.2.1 The scoring system of Appendix C will apply.

14.2.2 Add RRS Appendix C10.3(b): 'When a single round robin is terminated before completion, or a multiple round robin is terminated during the first round robin, the highest score shall be determined as the average points scored per match sailed by each competitor, unless one or more competitor has completed less than one third of the scheduled matches when the entire round robin shall be disregarded and if necessary the event declared void.'

15 Support Boats and Personnel

15.1 All support boats shall be registered with the organizing authority and will be required to comply with local legislation and event support boat regulations. The organizing authority may refuse registrations and accept later registrations at their sole discretion.

15.2 All support boats shall clearly display the 3 letter national code of their ISAF Member National Authority at all times while afloat. The minimum height for the letters shall be 200 mm.

15.3 Support boats with team leaders, coaches and other support personnel shall stay outside areas where boats are racing from the time of the preparatory signal for the first fleet to start until all boats have finished or the race committee signals a postponement, general recall or abandonment.

16 Berthing

Boats shall be kept in their assigned places in the boat park or harbour.

17 Haul-Out Restrictions

Boats assigned places in the harbour shall not be hauled out during the regatta, except with and according to the terms of prior written permission of the Race Committee.

18 Diving Equipment and Plastic Pools

Underwater breathing apparatus and plastic pools or their equivalent shall not be used around keelboats between the preparatory signal of the first race and the end of the regatta.

19 Radio Communication

Except in an emergency, a boat shall neither make nor receive radio transmissions, text messages or cellular phone calls while racing except in an emergency or when using equipment provided by the race committee.



20 Prizes

Medals will be awarded to the top 3 boats in each event. The Organising Authority may alter prizes if less than 10 boats are entered in an event.

21 Insurance

Each participating team is required to hold a valid insurance certificate showing proof of third-party liability coverage of at least £1,500,000 (or equivalent) per incident.

22 Disclaimer of Liability

Competitors participate in the regatta entirely at their own risk. See rule 4, Decision to Race. Neither the organizing authority nor ISAF will accept any liability for material damage or personal injury or death sustained in conjunction with or prior to, during, or after the regatta.

23 Media Rights, Cameras and Electronic Equipment

23.1 By participating in an event of the ISAF Sailing World Cup competitors automatically grant to the organizing authority, ISAF and their sponsors, the right in perpetuity to make, use and show, from time to time at their discretion, any motion pictures and live, taped or filmed television and other reproductions of the athlete during the period of the competition without compensation.

23.2 Boats may be required to carry cameras, sound equipment or positioning equipment as specified by the organizing authority.

23.3 The top three competitors as well as the individual race winners may be required to attend a media press conference each day.

23.4 Competitors may be required for interviews at the regatta.

24 Further Information

For further information please contact

ACCOMMODATION

Competitors in the Skandia Sail for Gold Regatta can contact the following web address for assistance in Hotel or apartment reservation:

<http://www.weymouth.gov.uk/Visitors/Accommodation>

FOR ANY FURTHER INFORMATION

Royal Yachting Association
David Campbell James, Event Director
david.campbell-james@rya.org.uk
+44 (0) 2380 604155



Eleanor Black, Event Co-ordinator
eleanor.black@rya.org.uk
+44 (0) 2380 604168



===== ADDENDA =====

Addendum A

ISAF Sailing World Cup (SWC) Series

A1 Regattas

The 2010 ISAF SAILING WORLD CUP series is comprised of the following regattas:

Sail Melbourne - Melbourne, AUS
Rolex Miami OCR – Miami, Florida, USA
Trofeo SAR Princess Sofia MAPFRE* - Palma de Mallorca, ESP
Semaine Olympique Francaise* - Hyeres, FRA
Delta Lloyd Regatta* - Medemblik, NED
Kieler Woche* - Kiel, GER
Skandia Sail for Gold Regatta* - Weymouth & Portland, GBR

*European event (see NoR A4.2.3)

A2 Property and Management

The ISAF Sailing World Cup is owned by ISAF and managed by ISAF and the regattas constituting the ISAF SWC.

A3 Sailing World Cup Series Scoring

A3.1 Sailing World Cup Points

A3.1.1 For each event at an ISAF Sailing World Cup regatta, the 20 boats ranked highest overall shall receive SWC points. The boat finishing in first place shall be scored 20 points, second place shall be scored 19 points, third place shall be scored 18 points, and so on. A boat finishing worst than twentieth place or not competing in the regatta shall be scored 0 points.

A3.1.2 A boat is not deemed to be competing in the SWC series until it has competed in at least one regatta during the current series.

A.3.2 Excludable Regatta Scores

A3.2.1 When fewer than three regattas have been completed, a boat's SWC series score shall be the total of her World Cup points.



A3.2.2 When from 3 to 5 regattas have been completed, a boat's SWC series score shall be the total of her World Cup points excluding the points for her worst regatta finish.

A3.2.3 When 6 or more regattas have been completed, a boat's SWC series score shall be the total of her World Cup points excluding:

- (a) the SWC series points for her worst regatta finish among the European regattas, and
- (b) the SWC series points for her remaining worst regatta finish.

A3.3 If a boat has two or more equal worst scores, the score(s) for the regatta(s) sailed earliest shall be excluded.

A3.4 SWC series ties shall be broken in accordance with RRS A8, replacing "race" with "regatta".

A3.5 Competitors placing first, second and third in the regatta will forfeit their regatta SWC points if they fail to attend the prize giving ceremony without first obtaining written permission from the Organizing Authority.

A4 Eligibility and Entry and Quotas

A4.1 For the purpose of determining the MNA Priority Order used in establishing eligibility and quotas, the order of each MNA's highest appearance on the ISAF Sailing World Cup standings will be determined:

A4.1.1 For Sail Melbourne, Rolex Miami OCR, Trofeo Princess Sofia MAPFRE, and Semaine Olympique Francaise by the prior year ISAF Sailing World Cup final series standings, or

A4.1.2 For Delta Lloyd Regatta, Kieler Woche, and Skandia Sail for Gold Regatta by the current year ISAF standings as of the Entry Quota deadline date.

A4.2 MNA's not appearing in the applicable SWC standings shall be sorted by application date and added at the end of the MNA Priority Order.

A5 Prizes

ISAF will award prizes to the top three crews in the SWC Series. Timing and location of the SWC prize giving will be announced by ISAF.



Addendum B

RYA Prescriptions that apply

Rule

5. Anti-Doping

The national authority procedural rules required by ISAF regulation 21.14 to implement the World Anti-Doping Code through ISAF regulation 21 are the *RYA Rules and Procedures for Anti-Doping*, as published on the RYA website.

68. Damages

1. Any claim for damages arising from an incident while a boat is bound by the Racing Rules of Sailing shall be subject to the jurisdiction of the courts and not considered by a protest committee.
2. A boat that takes a penalty or retires does not thereby admit liability for damages or that she has broken a rule.

86.3 Rule Changes

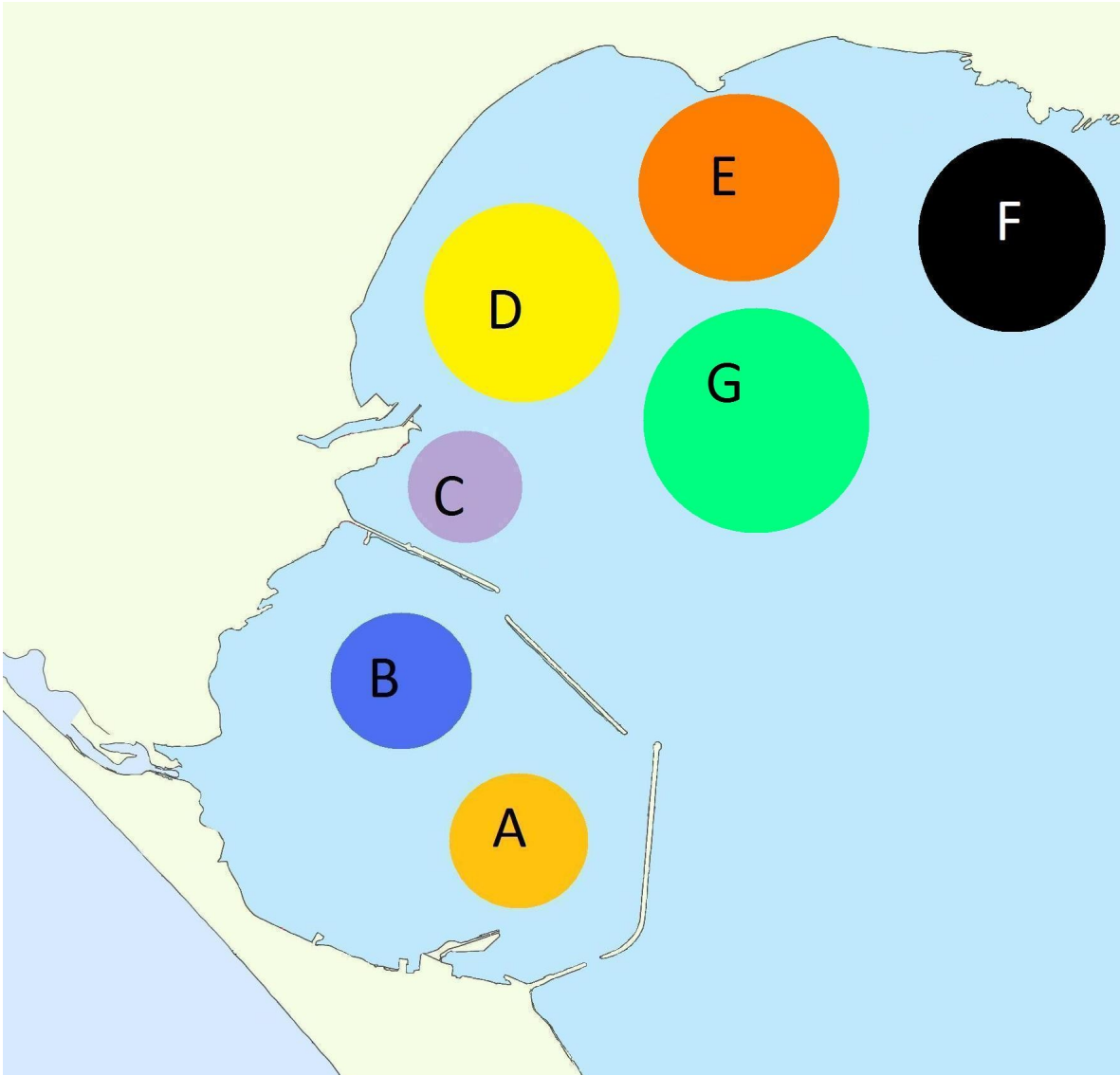
An organizing authority wishing to develop and test a rule change shall obtain prior approval from the RYA. The organizing authority shall promptly report the results of the test to the RYA.

88.2 Changes to National Authority Prescriptions

Notices of race and sailing instructions shall not change a prescription of the RYA. However, when an international jury has been appointed for an event, only the prescriptions of rules 5, 68, 86.3 and 88.2 shall apply.

Addendum C

Racing areas



Course A – Paralympics, Course B – RS:X, Course C – Women’s match racing, Course D – 49er, Course E – Laser and Laser Radial, Course F – 470, Course G – Finn and Star

