



**2026 Mayor's Cup**  
**Women's Match Race Invitational**  
Long Beach Yacht Club – OA  
World Sailing Grade 3  
Long Beach, CA

**November 7-8, 2026**  
Registration and Practice November 6

## **NOTICE OF RACE**

The following abbreviations apply to this Notice of Race and the Sailing Instructions:

PC: Protest Committee

NOR: Notice of Race

OA: Organizing Authority

RRS: Racing Rules of Sailing

WS: World Sailing

SI: Sailing Instruction

RC: Race Committee

TD: Technical Delegate

ONB: Official Notice Board

[NP]: A boat may not protest as per NoR 1.3

[DP]: A discretionary penalty may be applied by the PC

### **1 RULES**

- 1.1 The event is governed by the rules as defined in *The Racing Rules of Sailing*, including RRS Appendix C.
- 1.2 The rules for the handling of boats and the equipment list, detailed as part of the SI, will apply, and will also apply to any practice sailing and sponsor races. Class rules will not apply.
- 1.3 The notation '[NP]' denotes a rule that shall not be grounds for protest by a boat and for which the Protest Committee may refuse to hold a hearing. This changes RRS 60.1.
- 1.4 The following US Sailing prescriptions do not apply: prescriptions to the preamble to Part 5, Section B, and to Rule 63.1(b).
- 1.5 **Major Alterations to the RRS**
  - (a) RRS C8.7 will be changed in the Sailing Instructions.
- 1.6 The event has applied for World Sailing Grade 3. This grading is subject to review by World Sailing. The event may be re-graded when there is clear reason to do so.

### **2 SAILING INSTRUCTIONS**

The SIs will be available after 1600 on November 5, 2026 on the ONB.

### **3 COMMUNICATION**

- 3.1 Notices to competitors will be posted on the ONB which is located online at:  
<https://www.lbyc.org/default.aspx?p=v35EvtView&type=0&ID=209441>
- 3.2 Signals made ashore will be displayed from the flagpole on the east deck.

## **4 ELIGIBILITY AND ENTRY**

- 4.1 Up to eight (8) female skippers will be invited. The winning skipper from the previous year receives an automatic berth. Skippers wishing to receive an invitation may register their request with the OA by submitting the RFI Form posted on the ONB.
- 4.2 Only skippers invited by the OA, and who confirm acceptance as detailed in the letter of invitation, will be eligible to enter this event. Submission of the entry form posted on the ONB, and payment of the non-refundable entry bond in the amount of **\$500 USD**, shall accompany the acceptance of the invitation.
- 4.3 All competitors shall meet the eligibility requirements of the [WS Eligibility Code](#).
- 4.4 All competitors shall obtain a WS Sailor ID by registering online using the [WS Sailor Dashboard](#). Skippers shall inform the OA of their WS Sailor ID at registration.
- 4.5 The skipper shall complete registration, pay the entry fee of **\$1000 USD** (inclusive of the entry bond in NoR 4.2), arrange the damage deposit in the amount specified in NoR 5.2, and ensure that all crew members complete crew weighing at the times specified in NoR 8.1 unless extended by the OA. To be considered an entry in the event, the skipper shall complete all registration requirements and pay all fees in USD.
- 4.6 When a skipper accepts an invitation and later withdraws within two months of the event or leaves the event before the end without written approval from the OA, a zero score may be applied to their ranking points for that event by World Sailing. (World Sailing Regulation 27.2.2(d)).

## **5 DAMAGE / DAMAGE DEPOSIT**

- 5.1 Each supplied boat is insured by the OA for third-party liability insurance.
- 5.2 Each skipper is responsible for the damage or loss to their boat unless responsibility is otherwise assigned by the umpires or PC. The **\$3500 USD** damage deposit is the limit of liability of each skipper for each incident. In the event that a deduction is made from the deposit, the skipper will be required to restore the deposit to the original value to continue in the event.
- 5.3 The OA will refund any remaining damage deposit within 30 days after the event.

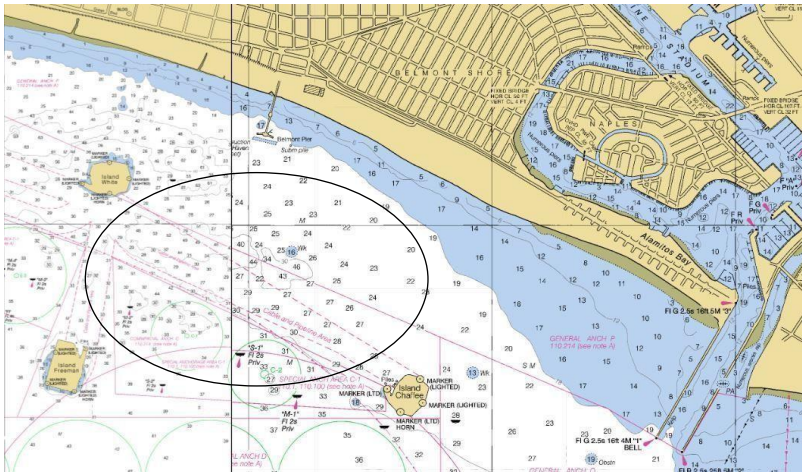
## **6 CREW (INCLUDING SKIPPER)**

- 6.1 The total number of crew, including the skipper, shall be 6, 7 or 8. All competitors shall be female and all registered crew shall sail all races.
- 6.2 After the warning signal for a match, the registered skipper shall not leave the helm, except in an emergency.
- 6.3 When a registered skipper is unable to continue in the event, the OA may authorize an original crew member to substitute.
- 6.4 When a registered crew member is unable to continue in the event, the OA or RC may authorize a substitute, a temporary substitute or other adjustment.
- 6.5 The total weight of the crew, including the skipper, dressed in at least shorts and shirts, shall not exceed 476 kg (1049.4 lbs), determined at the time of registration or such time as required by the RC.
- 6.6 Crew weight may be checked during the regatta. When crew weight was checked prior to racing, at any re-weighing the total weight limit is increased by 10 kg (22.0 lbs). Any crew weighing in excess of this increased limit shall not be penalized, but they shall reduce their weight to the increased weight limit before racing again.
- 6.7 The OA may place a person on each boat as either a guest, cameraman, or umpire observer.

## **7 EVENT FORMAT**

- 7.1 The OA intends to provide eight (8) Catalina 37 type boats for racing in the event. Each boat will have the following sails: Mainsail, Genoa, Jib, Spinnaker.
- 7.2 Boats will be allocated as decided by the race committee. The intention of the RC will be to allocate boats by draw, either daily or for each round.
- 7.3 The sails to be used will be allocated by the RC. Competitors may be requested to exchange sails during a series to satisfy sponsorship commitments. Rotation of the sails by the OA or RC for any reason shall not be grounds for redress. This changes RRS 61.4(b).
- 7.4 While all reasonable steps are taken to equalize the boats, variations will not be grounds for redress. This changes RRS 61.4(b).
- 7.5 The number of matches to be sailed each day will be determined by the RC, with the intention to start each subsequent flight as soon as practicable after the previous flight.
- 7.6 The course will be windward/leeward with starboard roundings, finishing downwind. A leeward gate may be used.

- 7.7 The intended racing area will be the Congressional Cup Stadium Course on Long Beach Harbor, shown in the diagram below.



- 7.8 Skippers will be seeded into a round robin based on World Sailing ranking list 30 days prior to the event. If the World Sailing Ranking list is not current, the OA will use its discretion to accomplish the seeding.
- 7.9 The event will consist of the following stages:
- (a) First Stage - Round Robin(s)
- (1) All skippers will sail a double round robin.
- 7.10 The RC may change the format, terminate any stage or the event when, in its opinion, it is impractical to attempt to hold the remainder of matches under the existing conditions or in the remaining time scheduled. Early stages may be terminated in favor of later stages.

## 8 PROVISIONAL PROGRAM

### 8.1 Schedule

- (a) Race Office opens November 6 at 1000.
- (b) Registration November 6 from 1000 to 1200 or November 7 from 0900 to 1000.
- (c) Crew weighing November 6 from 1000 to 1200 or November 7 from 0800 to 0900.
- (d) Practice November 6 from 1100 to 1700.
- (e) First Skipper's Briefing November 7 at 0900.
- (f) First meeting with Umpires immediately following First Briefing.
- (g) Sunday briefing at 0900.
- (h) Racing days are November 7-8.
- (i) Time of the first attention signal each day will be 1030 or as announced at the daily briefing.
- (j) The latest time for an attention signal on the last day of racing will be 1600.
- (k) Prize giving as soon as practicable after racing on the final day.
- 8.2 Unless excused by the OA, attendance at the following is mandatory:
- (a) Initial briefing for skippers.
- (b) Daily briefing for skippers.
- (c) Prize giving for the top three skippers and crews.

## 9 ADVERTISING

[NP] Boats shall display advertising chosen and supplied by the OA.

## 10 [NP] CODE OF CONDUCT

- 10.1 Competitors and Support Persons shall comply with any reasonable request from any official, including attendance at official functions, co-operation with event sponsors and shall behave so as to not bring the event into disrepute.
- 10.2 Competitors and support persons shall handle any equipment and place advertising provided by the organizing authority with care, seamanship, in accordance with any instructions for its use and without interfering with its functionality.

**11 [NP] SUPPORT PERSONS**

- 11.1 Support person vessels shall conspicuously display identification of the team being coached.
- 11.2 Support persons shall stay approximately 100m from the racing area while boats are racing and comply with reasonable requests from the officials.
- 11.3 Any interference by a coach boat with the racing or event organization may result in a penalty applied at the discretion of the PC to the associated skipper or team.
- 11.4 The OA will not provide berths for support person vessels.

**12 [NP] MEDIA, IMAGES, and SOUND**

- 12.1 The OA has the right to use any images and sound recorded during the event free of any charge.
- 12.2 Competitors shall not interfere with the normal working of the OA-supplied media equipment.

**13 DATA PROTECTION**

There are no specific data requirements at this event or venue.

**14 ASSUMPTION OF RISK; WAIVER AND RELEASE**

All participants in this event, including but not limited to skippers, crew and support personnel, must review and sign and return to the LBYC Race Office, a copy of the Long Beach Yacht Club [Regatta Waiver and Release of Liability](#), available at the LBYC Race Office, or online at the time of entry, or on the Official Notice Board.

**15 PRIZES**

- 15.1 The principal prize for first place will be the skipper's name engraved on the Mayor's Cup Perpetual Trophy.
- 15.2 Medals will be awarded to the top three teams.

**16 FURTHER INFORMATION**

Regatta Co-Chair	Carling Freeborn		
Regatta Co-Chair	Marilyn Cassidy		
Race Office	Cameron MacLaren	<a href="mailto:raceoffice@lbyc.org">raceoffice@lbyc.org</a>	(562) 294-5161